

# PracticeVCE

## Pass Your Next Certification Exam Fast!

Everything you need to prepare, learn & pass your certification exam easily.

365 days free updates. First attempt guaranteed success.

15+  
YEARS IN BUSINESS

39795+  
SUCCESSFULL CASES

39305+  
SATISFIED CLIENTS

39395+  
THE NUMBER OF CONSULTING

## TRY BEFORE YOU BUY

Download a free sample of any of our exam questions and answers

- ✓ 24/7 customer support, Secure shopping site
- ✓ Free One year updates to match real exam scenarios
- ✓ If you failed your exam after buying our products we will refund the full amount back to you.



### 365 Days Free Updates

Free update is available within 365 days after your purchase. After 365 days, you will get 50% discounts for updating.



### Security & Privacy

We respect customer privacy. We use McAfee's security service to provide you with utmost security for your personal information & peace of mind.



### Instant Download

After Payment, our system will send you the products you purchase in mailbox in a minute after payment. If not received within 2 hours, please contact us.



### Money Back Guarantee

Full refund if you fail the corresponding exam in 60 days after purchasing. And Free get any another product.

<http://www.practicevce.com>

Professional Study Tool and Reliable Exam Practice Material

**Exam** : **250-405**

**Title** : Administration of Symantec  
Management Platform 7.5

**Vendor** : Symantec

**Version** : DEMO

NO.1 Which Symantec Management Platform component processes data sent by the Altiris Agent and stores it in the Configuration Management Database?

- A. Symantec Management Console
- B. Software Management Framework
- C. Notification Server
- D. Site Services

**Answer:** C

NO.2 What must an administrator do to edit a sample task?

- A. Clone the sample task and edit the original task
- B. Right-click and select the task's properties
- C. Clone the source folder of the sample
- D. Clone the sample task and edit the clone

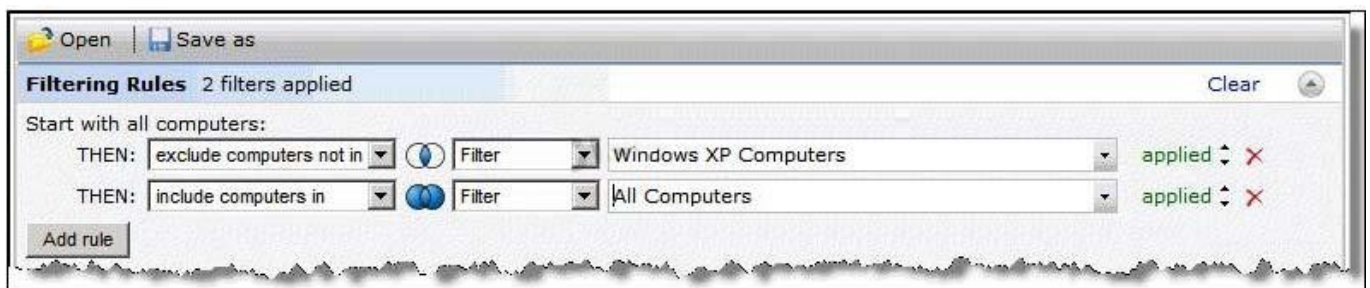
**Answer:** D

NO.3 A Symantec Management Platform 7.5 administrator attempts to discover all network resources using the ping function, and none are found. After conferring with the network administrator, it is determined that ping is blocked on all network devices for security purposes. Which other protocol can the administrator use to discover network devices using Network Discovery?

- A. CDP
- B. HIP
- C. ARP
- D. RIP

**Answer:** C

NO.4 Refer to the Exhibit.



A target has been created with two rules: 1) 'exclude computers not in' filter Windows XP Computers, and 2) 'include computers in' filter All Computers. There are 150 computers in the Windows XP Computers filter. There are 200 computers in the All Computers filter. How many computers will be in the target?

- A. 50
- B. 150
- C. 200
- D. 350

**Answer:** C

NO.5 Which statement is true about the Default Shared Schedules shipping with Notification Server?

- A. They cannot be deleted.
- B. They cannot be modified.
- C. They can override maintenance windows.
- D. They cannot be disabled.

**Answer:** A

NO.6 What can the administrator use to have resources assigned to specific sites without administrative intervention and as they register with the Notification Server?

- A. Automation policy
- B. Active Directory import policy
- C. Inventory policy
- D. Custom Inventory policy

**Answer:** A

NO.7 A named resource target contains 50 computers in the Sales Department. Several policies and tasks are applied to this target. An administrator modifies one of these policies by changing this target so that the policy now applies to 25 computers in the Engineering Department. How are the policies and tasks affected?

- A. Only the policy that the administrator changed is affected; all others only apply to the 50 computers in the Sales Department.
- B. Only the policies and tasks that the administrator created are affected and apply to the 25 computers in the Engineering Department.
- C. Every policy and task that applies to the target now applies to 75 computers in both the Sales and Engineering Departments.
- D. Every policy and task that applies to the target now only applies to the 25 computers in the Engineering Department.

**Answer:** D

NO.8 What defines the link between user and computer resources?

- A. Resource Association
- B. Resource Data Class
- C. Resource Type
- D. Resource Link

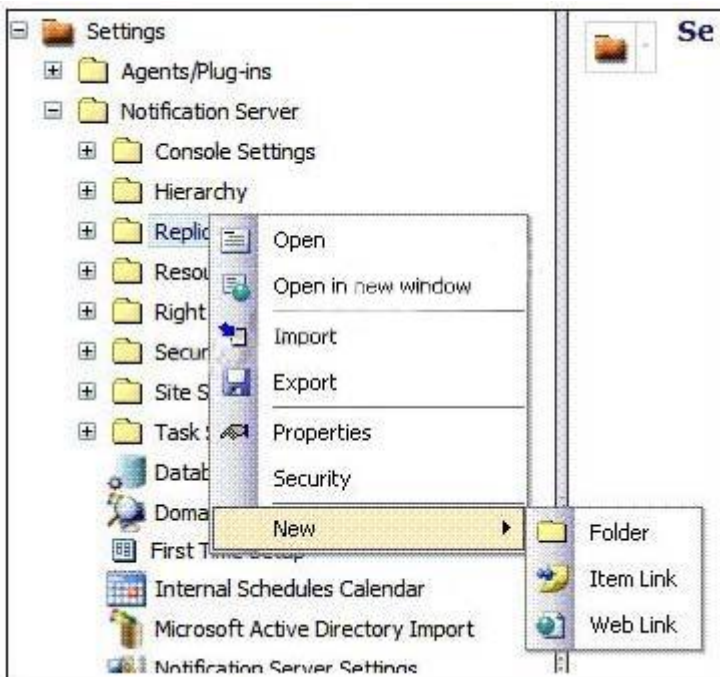
**Answer:** A

NO.9 Which two tabs are used to modify security roles in the Symantec Management Console? (Select two.)

- A. Permissions
- B. Privileges
- C. Rights
- D. Security
- E. Membership

**Answer:** B,E

NO.10 Refer to the Exhibit.



An administrator is attempting to set up a replication rule. When the administrator right-clicks the replication folder, the menu in the exhibit appears. What does the administrator need to do to create a replication rule?

- A. enable Replication
- B. access one of the Replication subfolders
- C. access the resource and select Replicate Now
- D. create a subfolder and access it there

**Answer:** B

NO.11 Which Symantec Management Platform component initiates policy-based communication?

- A. Notification Server
- B. Symantec Management Agent
- C. Configuration Management Database (CMDB)
- D. Symantec Management Console

**Answer:** B

NO.12 If installation of the Package Service on the Site Server is forgotten, what is the impact on a new hierarchy implementation?

- A. Replication performance is degraded.
- B. Data replication stops.
- C. Hierarchy installation is denied.
- D. Hierarchy replication switches to HTTP.

**Answer:** C

NO.13 Which statement describes the relationship between Site Server and Notification Server?

- A. Site Server assists Notification Server by providing packages and tasks to the Altiris Agent.
- B. Site Server sends information, events, and data from the Inventory Rule Agent to Notification Server.
- C. Site Server assists Notification Server by running reports.
- D. Site Server takes over all functions for Notification Server.

**Answer:** A

NO.14 Which two methods can an administrator use to create tasks? (Select two.)

- A. clone an existing task
- B. clone a task report
- C. right-click a reports folder and select New -> Task
- D. right-click a Jobs and Tasks Portal folder and select New -> Task
- E. clone an existing patch

**Answer:** A,D

NO.15 Two administrators run the same report that displays Windows XP SP1 workstations imported from Active Directory. The North America Symantec Administrator returns 2,500 workstations. The Marketing Manager returns 500 workstations. When they compare the results, they find that there is an overlap of 100 workstations. Why is there an overlap in the reports?

- A. Because the workstations belong to multiple organizational groups in same organizational view.
- B. Because the workstations belong to organizational groups in separate organizational views
- C. Because of workstation security privilege intersection
- D. Because of workstation security role filters

**Answer:** B