

PracticeVCE

Pass Your Next Certification Exam Fast!

Everything you need to prepare, learn & pass your certification exam easily.

365 days free updates. First attempt guaranteed success.

15+
YEARS IN BUSINESS

39795+
SUCCESSFULL CASES

39305+
SATISFIED CLIENTS

39395+
THE NUMBER OF CONSULTING

TRY BEFORE YOU BUY

Download a free sample of any of our exam questions and answers

- ✓ 24/7 customer support, Secure shopping site
- ✓ Free One year updates to match real exam scenarios
- ✓ If you failed your exam after buying our products we will refund the full amount back to you.



365 Days Free Updates

Free update is available within 365 days after your purchase. After 365 days, you will get 50% discounts for updating.



Security & Privacy

We respect customer privacy. We use McAfee's security service to provide you with utmost security for your personal information & peace of mind.



Instant Download

After Payment, our system will send you the products you purchase in mailbox in a minute after payment. If not received within 2 hours, please contact us.



Money Back Guarantee

Full refund if you fail the corresponding exam in 60 days after purchasing. And Free get any another product.

<http://www.practicevce.com>

Professional Study Tool and Reliable Exam Practice Material

Exam : **98-379**

Title : Software Testing
Fundamentals

Vendor : Microsoft

Version : DEMO

NO.1 Which two items are measurements of software quality? (Choose two.)

- A. Program load time
- B. End-user acceptance testing
- C. Requirements analysis
- D. User interface responsiveness

Answer: A,B

NO.2 You are using Microsoft Test Manager to run automated tests in a virtual environment.

If a script fails, which three actions can you perform in Microsoft Test Manager? (Choose three.)

- A. Abort
- B. Retry
- C. Skip
- D. Save
- E. Continue

Answer: A,B,C

NO.3 This question requires that you evaluate the underlined text to determine if it is correct.

The test configuration informs the tester of the setup that is required for the tests in a test plan.

Select the correct answer if the underlined text does not make the statement correct. Select "No change is needed" if the underlined text makes the statement correct.

- A. No change is needed
- B. Test case
- C. Test suite
- D. Expected test result

Answer: A

NO.4 You use Microsoft Test Manager to test a solution.

Which two statements about using test cases in Microsoft Test Manager are correct? (Choose two.)

- A. You can share steps between different test cases.
- B. You need to add all fields to a test case when you create the test case.
- C. You must define test cases by using Microsoft Test Manager.
- D. You can add attachments and hyperlinks to test cases.

Answer: A,B

NO.5 This question requires that you evaluate the underlined text to determine if it is correct.

Test-driven development is a feature of certain forms of waterfall software development lifecycles.

Select the correct answer if the underlined text does not make the statement correct. Select "No change is needed" if the underlined text makes the statement correct.

- A. No change is needed
- B. Agile
- C. Spiral
- D. Top-down

Answer: B

NO.6 This question requires that you evaluate the underlined text to determine if it is correct.

Visual Studio saves test result data in a .txt file.

Select the correct answer if the underlined text does not make the statement correct. Select "No change is needed" if the underlined text makes the statement correct.

- A. No change is needed
- B. .dat
- C. .tst
- D. .trx

Answer: D

NO.7 You are developing an application to track the migration patterns of birds.

The application must support 250 simultaneous users.

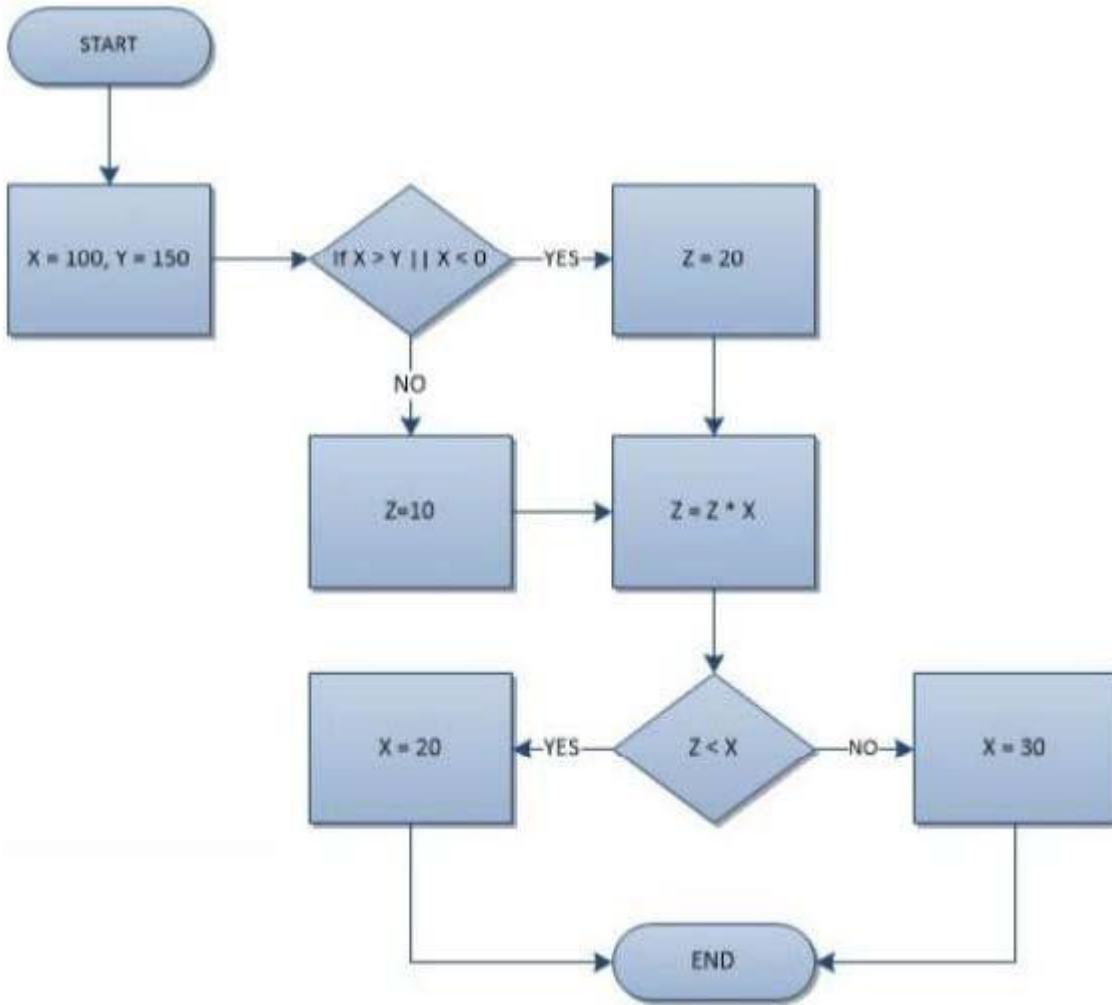
How should you test for this requirement?

- A. Perform regression testing.
- B. Perform load testing.
- C. Host the application on a cluster.
- D. Limit the functionality of the application.

Answer: B

NO.8 HOTSPOT

You have the following flow chart:



Use the drop-down menus to answer each question. Each correct selection is worth one point.

Answer Area

What is the value of X?

What is the value of Z?

Answer Area

What is the value of X?

20
30
100

What is the value of Z?

10
1000
2000**Answer:****Answer Area**

What is the value of X?

20
30
100

What is the value of Z?

10
1000
2000

NO.9 What does a checklist burnup chart display?

- A. The estimated remaining hours of work for the sprint
- B. The count of items completed and whether the team will complete the remaining items by the end of the sprint
- C. The actual remaining hours of work for the sprint
- D. The count of items remaining and whether the team will complete the remaining items by the end of the sprint

Answer: BNO.10 Which two techniques are used to gather data when you are profiling an application?
(Choose two.)

- A. Plug-in
- B. Instrumentation
- C. Sampling
- D. Editor extension point
- E. Interrupts

Answer: A,C

NO.11 A system has the following requirements:

- If the order total is equal to or more than \$50 and less than or equal to \$100, then a 2 percent discount is applied,
- If the order total is more than \$100 and less than or equal to \$200, then a 5 percent discount is applied.
- If the order total is more than \$200, then a 10 percent discount is applied.

How many conditions must you test?

- A. 0
- B. 1
- C. 3
- D. 5

Answer: D

NO.12 This question requires that you evaluate the underlined text to determine if it is correct.

Scope describes how important it is to fix a defect, or how quickly a defect must be fixed.

Select the correct answer if the underlined text does not make the statement correct. Select "No change is needed" if the underlined text makes the statement correct.

- A. No change is needed
- B. Effect level
- C. Priority
- D. Severity

Answer: C